



Kansas Child Welfare Summit

Working together to create lasting improvement in child welfare.

Mental Health in Kansas Child Welfare

Presented by Andy Brown and Sheamekah Williams

Objectives

We want you to be able to answer two questions when you leave:

- 1) Where do I go to get help?
- 2) What resources can I access?

Handouts

- You should receive or have access to handouts that accompany this presentation.
- You are free to reproduce these handouts and share them.
- Many of them contain information that will help answer the objectives of this presentation.
- More importantly many of them will help foster parents navigate the mental health system.
- When in doubt, make a call. Most resources can help connect you to other resources. 988 and 211 are good places to start if you lose your handouts.

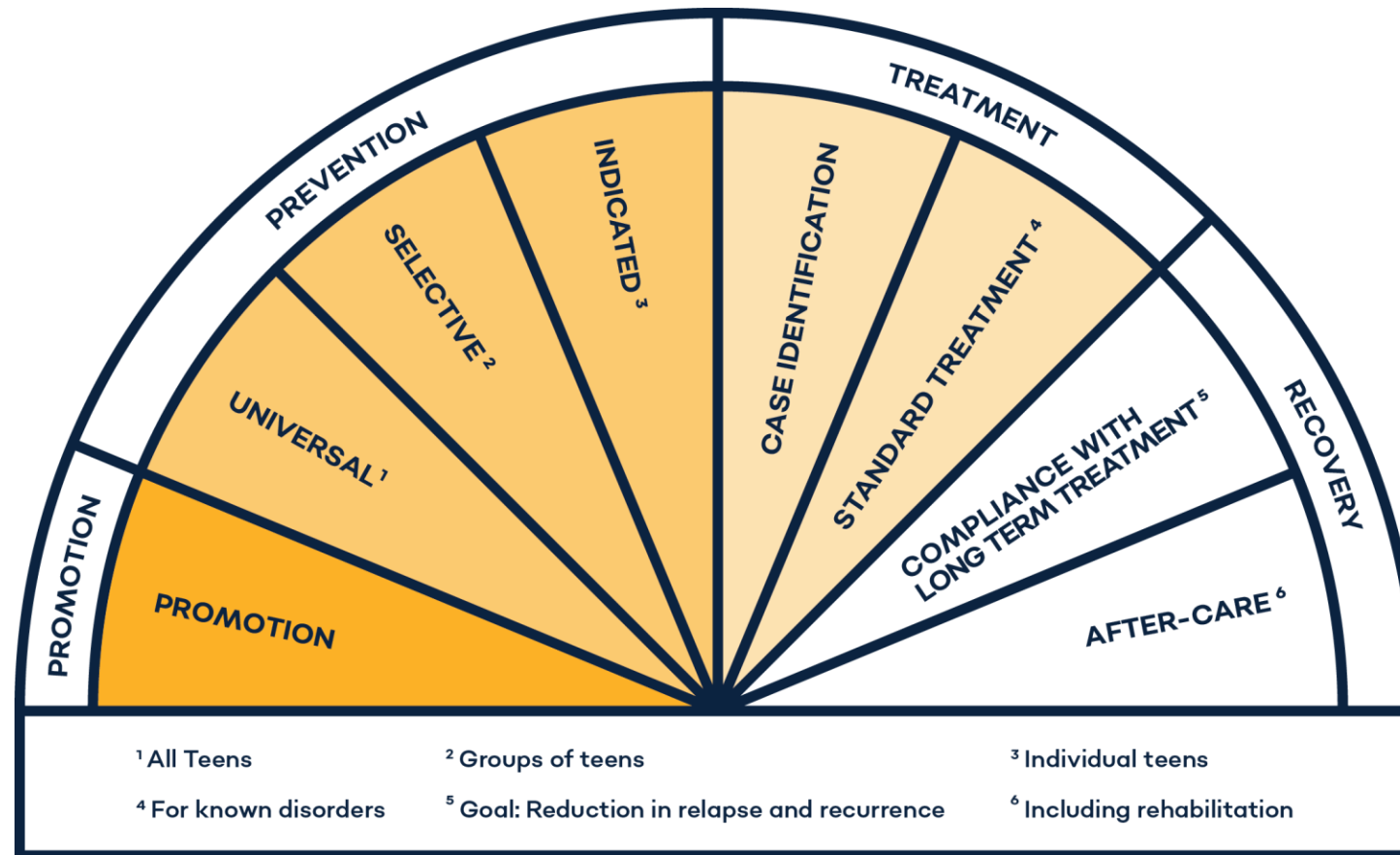
2023 Headlines

- “Kansas foster kids suffer from shortage of mental health providers, high caseloads”
- “Kansas foster kids need mental health care, but trying to add more is expensive”
- “Kansas foster care providers working to address children’s mental health needs”
- “A 15-year-old’s suicide while in Kansas foster care came amid a shortfall in mental health care”
- “Audits find Kansas foster kids still sleep in state offices and don't get enough mental health care”

Who has a role in increasing access to care?

- Public Schools
- Primary Care Providers
- Foster Care Contractors
- Mental Health Providers
- Helplines & Resource Agencies
- State Agencies (KDADS, DCF, KDHE)
- Federal Agencies (CMS, SAMHSA)
- Foster Parents

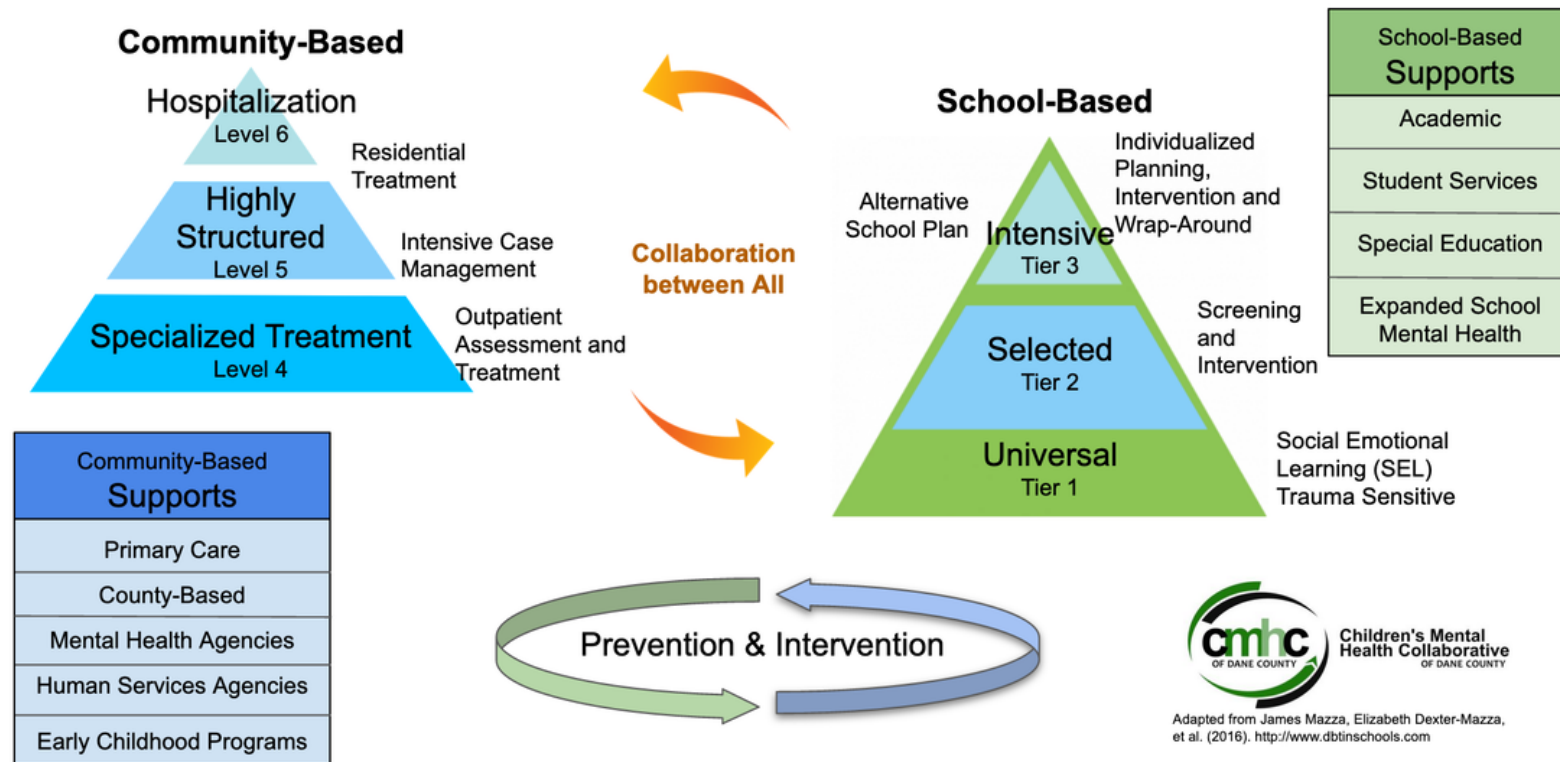
Continuum of Care



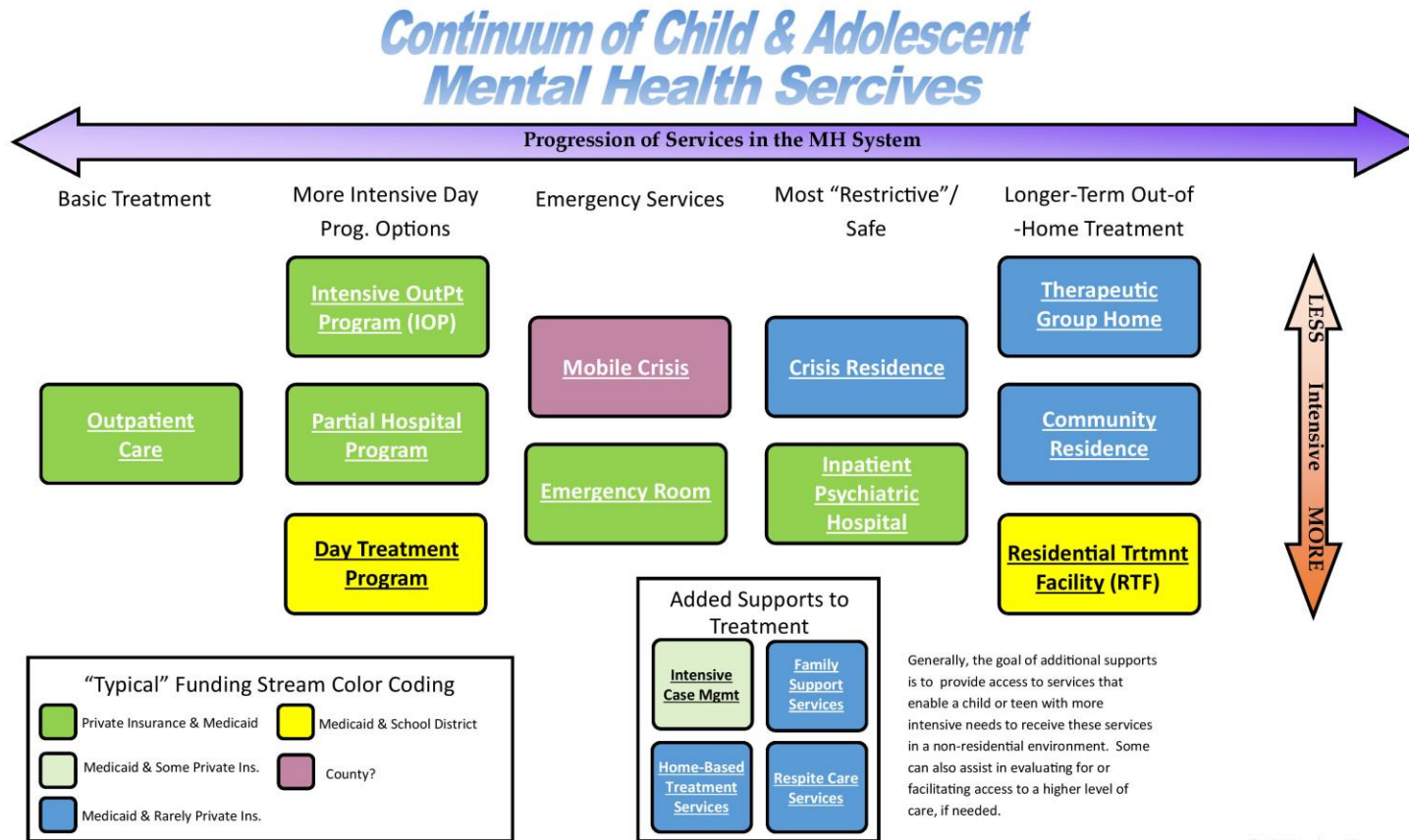
School-Community Framework

School-Community Framework of Mental Health Supports

Family-Based • Trauma-Informed • Data-Driven • Culturally Responsive • Collaborative



Children's Continuum of Care



Practice Improvement 4

- “Defendants (DCF, KDADS, KDHE, etc.) shall ensure that Crisis Intervention Services are available to Class Members (Foster Care Children) statewide.”
- To access these services you can call 988, 1-833-441-2240 or your local CCBHC/CMHC crisis line.
- These services are provided in person or virtually to a person experiencing a mental health crisis. This includes a preliminary assessment to determine the level of care needed, crisis resolution and de-escalation, crisis intervention and stabilization, and timely referral to community services.

Crisis Now Model

A crisis response framework created by the Substance Abuse and Mental Health Services Administration (SAMHSA) recommends communities build infrastructure that provides **someone to talk to (crisis lines), someone to respond (mobile crisis teams) and somewhere to go (crisis triage centers).**



**SOMEONE
TO TALK TO**



**SOMEONE
TO RESPOND**



**SOMEWHERE
TO GO**

MRSS Model

Mobile Response and Stabilization Services (MRSS) is a crisis intervention model that emphasizes the need to respond to crises with urgency to the immediate needs of children, youth, young adults, and their caregivers. MRSS is part of larger state health reform initiatives and a necessary component of a robust and comprehensive system design. It is comprised of three service components:

1. Someone to Contact—the access points for those experiencing a crisis and their caregivers
2. Someone to Respond—mobile units that respond to crises in homes
3. System to Support—stabilization services for those who need them

CCBHC Crisis Services

- A CCBHC is required to provide crisis management services that are available and accessible 24 hours a day regardless of the patient's ability to pay or a place of residence, homelessness, or lack of a permanent address. Crisis mental health services, include 24-hour mobile crisis teams, emergency crisis intervention services, and crisis stabilization.
- If the initial screening identifies an emergency/crisis need, appropriate action is taken immediately, including any necessary subsequent outpatient follow-up.
- For those presenting with emergency or urgent needs, the initial evaluation may be conducted telephonically or by telehealth/telemedicine but an in-person evaluation is preferred. If the initial evaluation is conducted telephonically, once the emergency is resolved the consumer must be seen in person at the next subsequent encounter and the initial evaluation reviewed.
- In accordance with the requirements of program requirement 4, the CCBHC provides crisis management services that are available and accessible 24 hours a day and delivered within three hours.

CCBHC Services



MCO Care Coordination

- Youth with behavioral health needs identified
- Youth that are in PRTFs
- Youth that are on the waiting list for a PRTF
- Youth that are transitioning out of a psychiatric hospitalization
- Youth in foster care that are on a waiver (I/DD, SED, Autism, TA)
- Youth that have specific medical needs identified
- Youth that will be transitioning out of foster care as they become an adult

CCBHC Care Coordination

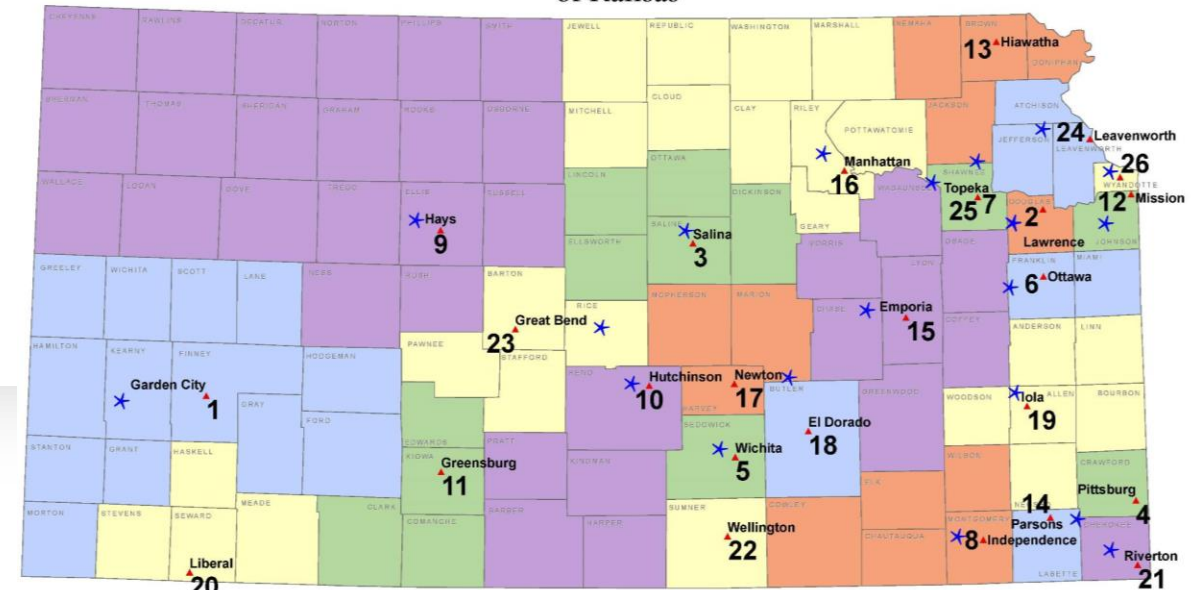
After initial intake CCBHCs are responsible for Care Coordination

- Youth with behavioral health needs identified
- Youth that are in PRTFs
- Youth that are on the waiting list for a PRTF
- Youth that are discharging from a PRTF
- Youth that are transitioning out of a psychiatric hospitalization
- Youth that are discharging from an ED following a mental health crisis

CCBHC/CMHC locations

- After contacting a CCBHC about a foster care youth, CCBHCs have one business day to complete an intake.
- Routine Care services must begin within 10 business days.
- Many CCBHCs offer same day intakes for walk-ins.
- When contacting a CCBHC about a new patient, please be prepared to present the patient to answer screening questions and complete an intake.

Certified Community Behavioral Health Clinics/ Community Mental Health Centers of Kansas



Locations of Community Mental Health Centers
Key to Map

- | | | |
|--|---|---|
| 1. Compass Behavioral Health *
Garden City – (620) 276-7899
Counties Served: Finney, Ford, Grant, Gray, Greeley, Hamilton, Hodgeman, Kearney, Lane, Morton, Scott, Stanton, Wichita
www.compassbh.org | 9. High Plains Mental Health Center *
Hays – (785) 628-2871 or (800) 432-0333
Counties Served: Cheyenne, Decatur, Ellis, Gove, Graham, Logan, Ness, Norton, Osborne, Phillips, Rawlins, Rooks, Rush, Russell, Sheridan, Sherman, Smith, Thomas, Trego, Wallace
www.highplainsmentalhealth.com | 17. Prairie View, Inc. *
Hays – (785) 628-2871 or (800) 432-0333
Counties Served: Harvey, Marion, McPherson
www.prairieview.org |
| 2. Bert Nash Community Mental Health Center Inc. *
Lawrence – (785) 843-9192
Counties Served: Douglas
www.bertnash.org | 10. Horizons Mental Health Center *
Hutchinson – (620) 663-7595
Counties Served: Barber, Harper, Kingman, Pratt, Reno
www.hmhc.com | 18. South Central Mental Health Counseling Center Inc.
Augusta – (316) 775-5491
Counties Served: Butler
www.scmhcc.org |
| 3. Central Kansas Mental Health Center *
Salina – (785) 823-6322
Counties Served: Dickinson, Ellsworth, Lincoln, Ottawa, Saline
www.ckmhc.org | 11. Iroquois Center for Human Development Inc.
Greensburg – (620) 723-2272
Counties Served: Clark, Comanche, Edwards, Kiowa
www.iccenter.com | 19. Southeast Kansas Mental Health Center *
Iola – (620) 365-8641
Counties Served: Allen, Anderson, Bourbon, Linn, Neosho, Woodson
www.sekmhcenter.org |
| 4. Community Mental Health Center of Crawford County
Pittsburg – (620) 231-5141
Counties Served: Crawford
www.crawfordmentalhealth.org | 12. Johnson County Mental Health Center *
Mission – (913) 715-5000
Counties Served: Johnson
https://www.sccgov.org/sep/mental-health/home | 20. Southwest Guidance Center
Liberal – (620) 624-8171
Counties Served: Haskell, Meade, Seward, Stevens
www.swguidance.org |
| 5. COMCARE of Sedgwick County *
Wichita – (316) 660-7800
Counties Served: Sedgwick
www.sedgwickcounty.org/comcare | 13. Kanza Mental Health & Guidance Center
Hiawatha – (785) 742-7113
Counties Served: Brown, Doniphan, Jackson, Nemaha
www.kanzamhcc.org | 21. Spring River Mental Health & Wellness *
Riverton – (620) 848-2300
Counties Served: Cherokee
www.srmhw.org |
| 6. Elizabeth Layton Center, Inc. *
Ottawa – (785) 242-3780
Counties Served: Franklin, Miami
www.laytoncenter.org | 14. Labette Center for Mental Health Services *
Parsons – (620) 421-3770
Counties Served: Labette
www.lcmhs.com | 22. Sumner County Mental Health Center
Wellington – (620) 326-7448
Counties Served: Sumner
www.sumnermentalhealth.org |
| 7. Family Service & Guidance Center *
Topeka – (785) 232-5005
Counties Served: Shawnee
www.fsgctopeka.com | 15. CrossWinds Counseling & Wellness *
Emporia – (620) 343-2211 or (800) 279-3645
Counties Served: Chase, Coffey, Greenwood, Lyon, Morris, Osage, Wabunsee
www.crosswinds.org | 23. The Center for Counseling and Consultation *
Great Bend – (620) 792-2544
Counties Served: Barton, Pawnee, Rice, Stafford
www.thecentercb.org |
| 8. Four County Mental Health Center *
Independence – (620) 331-1748
Counties Served: Chautauqua, Cowley, Elk, Montgomery, Wilson
www.fourcounty.com | 16. Pawnee Mental Health Services *
Manhattan – (785) 587-4300
Counties Served: Clay, Cloud, Geary, Jewell, Marshall, Mitchell, Pottawatomie, Republic, Riley, Washington
www.pawnee.org | 24. The Guidance Center Inc. *
Leavenworth – (913) 682-5118
Counties Served: Atchison, Jefferson, Leavenworth
www.theguidance-cfr.org |
| | | 25. Valeo Behavioral Healthcare *
Topeka – (785) 233-1730
Counties Served: Shawnee
www.valeotopeka.org |
| | | 26. Wyandot Center for Community Behavioral Health *
Inc.
Kansas City – (913) 328-4800
Counties Served: Wyandotte
www.wyandotcenter.org |

SED Waiver

- Youth in Foster Care CAN access the SED waiver. They just cannot access respite as the Foster Care contractor is responsible for this service.
- The SED waiver is only available if they are placed in a non-group setting. If they are in a QRTP, YRC, group home or shelter they are not eligible, but CAN still receive CCBHC services.
- SED waiver services are separate from CCBHC services and are provided by the CMHC.
- Children do not need to be in foster care to access the SED waiver.

SED Waiver Services

- Parent Support and Training
- Independent Living/Skills Building
- Short Term Respite Care (Through Foster Care Contractor)
- Wraparound Facilitation
- Professional Resource Family Care
- Attendant Care
- For more information about the SED program, including its services and requirements, please download the HCBS SED Manual - January 2022 Edition.

SED Waiver Eligibility

1. Be age 4-18 years old;
2. Have a diagnosed mental health condition which substantially disrupts the ability to function socially, academically, and/or emotionally;
3. Be at risk of inpatient psychiatric treatment;
4. Meet CAFAS assessment and CBCL threshold for eligibility;
5. Be financially eligible for Medicaid. (All Foster Care Children)

To apply contact your local CCBHC/CMHC.